



CHRONICLE[™]
HERITAGE

STATEMENT OF QUALIFICATIONS

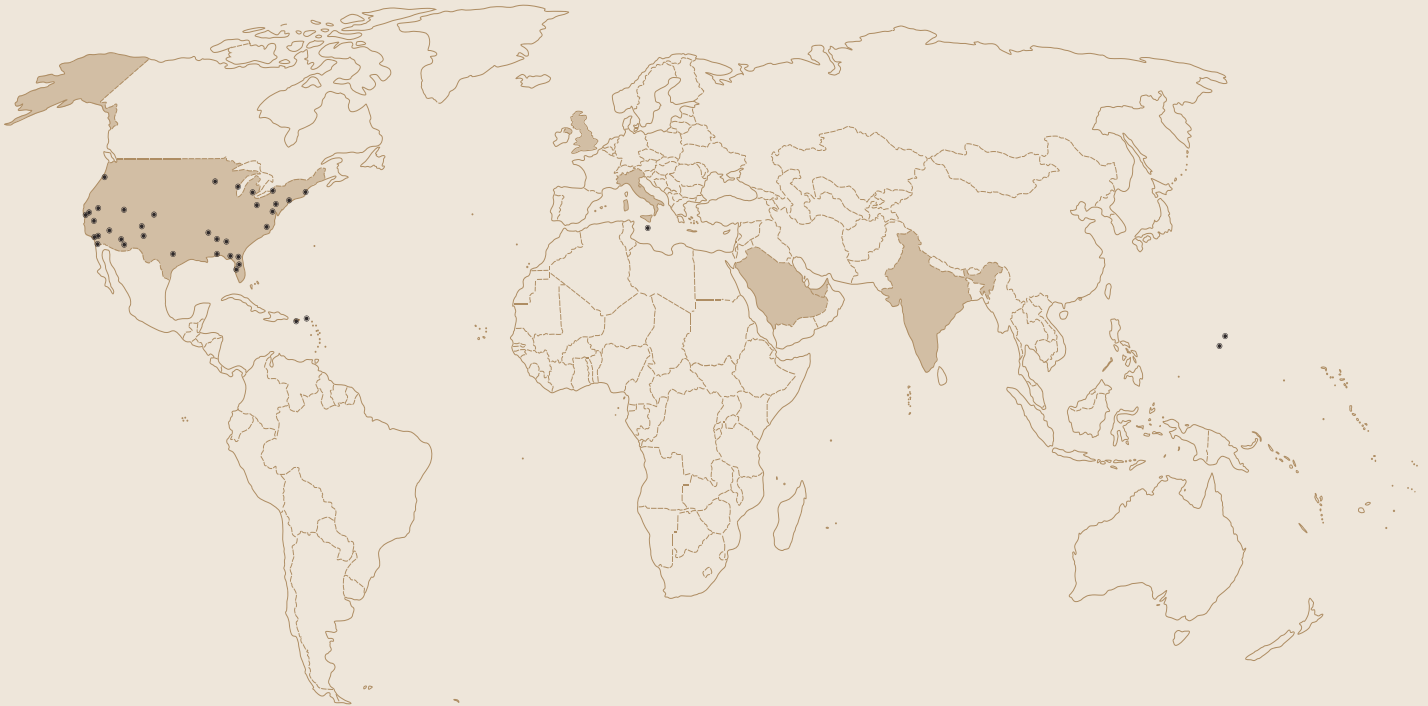
Business-Focused Cultural Resource
and Heritage Management



BREAK NEW GROUND

Chronicle Heritage is dedicated to solution-driven consulting on behalf of clients needing their projects guided through the regulatory challenges posed by cultural resources (prehistoric, historic, architectural, ethnographic, and paleontological).

Founded in 2006, Chronicle Heritage has carried out projects from coast to coast and internationally. Our clientele includes a range of state and federal agencies, tribes, and private-sector clients. The firm's work has gained the trust of government agencies, such as the Department of Defense, Department of Energy, Federal Energy Regulatory Commission, Bureau of Land Management, Bureau of Reclamation, and U.S. Forest Service. Our tribal work has included aiding the establishment of THPO offices and several very large infrastructure projects. Chronicle Heritage's proficiency supporting the needs of energy development, water and land development, mining and exploration, and related industries has gained us trust and repeat business from a wide variety of firms in the private sector.



U.S. OFFICE LOCATIONS

TUSCALOOSA, AL
PHOENIX, AZ
TEMPE, AZ
TUCSON, AZ
S.F. BAY AREA, CA
FRESNO, CA
LOS ANGELES, CA

REDLANDS, CA
SACRAMENTO, CA
SAN DIEGO, CA
DENVER, CO
IGNACIO, CO
GAINESVILLE, FL
LAKELAND, FL

PENSACOLA, FL
TALLAHASSEE, FL
TAMPA BAY, FL
COLUMBUS, GA
LITTLETON, MA
DEXTER, MI
MINNEAPOLIS, MN

LAS VEGAS, NV
RENO, NV
ALBUQUERQUE, NM
BUFFALO, NY
NEW YORK, NY
TARBORO, NC
COLUMBUS, OH

PORTLAND, OR
WEST CHESTER, PA
MEMPHIS, TN
AUSTIN, TX
SALT LAKE CITY, UT
CHANTILLY, VA
MILWAUKEE, WI

INTERNATIONAL PRESENCE

GUAM
INDIA

ITALY
KINGDOM OF SAUDI ARABIA

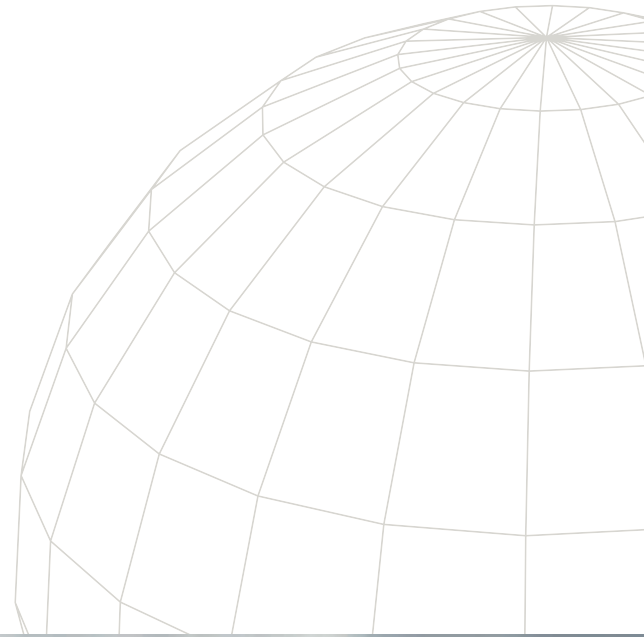
MALTA
N. MARIANA ISLANDS

PUERTO RICO
UNITED ARAB EMIRATES

UNITED KINGDOM
U.S. VIRGIN ISLANDS

TIMELY, EFFECTIVE ASSITANCE WHEREVER YOU ARE AROUND THE GLOBE

As the largest firm of its kind in the world, Chronicle Heritage possesses the expansive network of regional experts and resources needed for complex projects in the U.S. and internationally.



BUSINESS-FOCUSED
CONSULTANTS
THAT DELIVER

OUR EXPERTISE & SERVICES

CULTURAL RESOURCES

- Historic, Prehistoric, and Underwater Archaeology
- Historical Resources
- Cultural Resource Surveys
- Testing and Local and National Register Evaluations
- Data Recovery and Mitigation
- Management Plans
- Cultural Resource Overviews and Historic Contexts
- Management Plans, Testing and Data Recovery Plans, Research and Sampling Designs
- Ethnographic and Ethnohistoric Research
- Tribal Consultation

PALEONTOLOGY

- Paleontological Field Surveys
- Literature Reviews and Research
- Fossil Salvage and Recovery

MAJOR PROJECT SOLUTIONS

- Pre-Construction Clearance Surveys
- Monitoring and Mitigation Plans Training
- Data Recovery and Treatment

GIS AND TECHNOLOGY

- Geographic Information Systems (GIS) and Database Services
- Geophysical Surveys
- Aerial Imaging
- 3D Modeling



WE SUPPORT CLIENTS IN:

- Land Development
- Energy Generation and Transmission
- Oil and Gas
- Communications
- Transportation
- Federal Government
- State and Local Government
- Mining
- Tribal





The nation's first all-digital firm of its kind, Chronicle Heritage has developed the premier approach to projects, employing a fully-digital workflow for data collection and management. We call it the Chronicle Way.

OUR APPROACH

The advanced digital system we bring to our clients improves the efficiency of our work and the quality of our products.

Our system improves the quality of data collected in the field while making the process more efficient, allowing us to deliver a higher-quality product to our clients at a better value and in less time.

Our system employs a customized database, mobile devices, and computers. The process streamlines data collection, eliminates rework and error, and produces report-ready data from the start, allowing faster turnarounds on deliverables and improving upon traditional data collection and reporting methods.

OUR SYSTEM

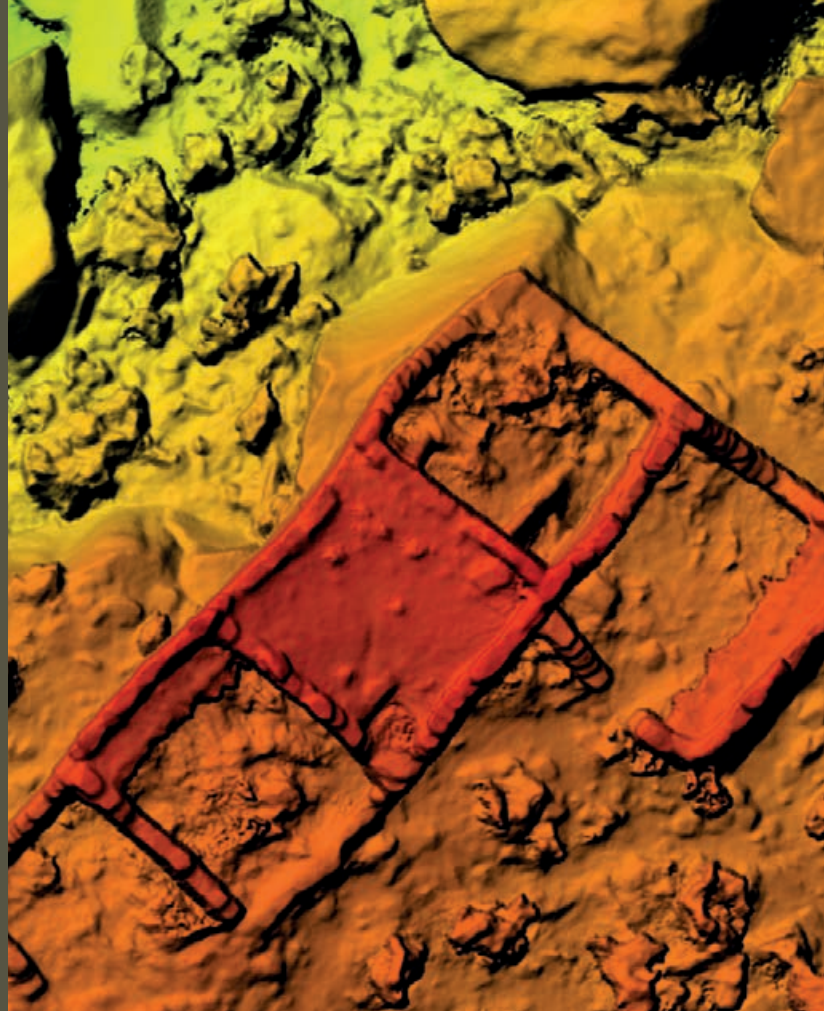
- Eliminates digitization after fieldwork
- Enables faster, more accurate data entry via autofill and other features
- Safeguards your project data with continuous backups
- Speeds projects through to completion



LEADING WITH TECHNOLOGY

3D MODELING

Chronicle Heritage's pioneering work in site, landscape, and object preservation through digital 3D modeling has proven invaluable in worldwide heritage preservation. Individual objects from project or museum collections can be quickly modeled for digital preservation, allowing later 3D replica printing. For sites under threat from looting or terrorist destruction, this provides a precise record for condition assessments and, if necessary, later reconstruction. Chronicle Heritage has reached agreements with tribes to create 3D models of funerary offerings so they are digitally preserved for scientific use before they are repatriated and reburied under provisions of the Native American Graves Protection and Repatriation Act (NAGPRA).



Our client-friendly approach combining state-of-the-art technology, knowledge, and expertise ensures maximum efficiency and keeps your project on track.



AERIAL IMAGING

Chronicle Heritage routinely incorporates low-altitude aerial mapping into its projects, as well as providing it as a standalone service. Chronicle Heritage maintains a fleet of fixed-wing and multi-rotor Unmanned Aerial Vehicles (UAVs) that can carry payloads to collect visible spectrum, near-infrared, and LiDAR data. This capability allows Chronicle Heritage to produce survey-grade maps, elevation models, and 3D reconstructions of subject sites, features, and landscapes at a fraction of the cost of using traditional surveyors and pilots. Chronicle Heritage was the first cultural resource firm to be issued a Section 333 Exemption by the FAA.



REALIZE
EXTRAORDINARY
QUALITY AND
UNPRECEDENTED
EFFICIENCY



CAPTURING ANCIENT HERITAGE USING MODERN PROCESSES

A WORLD OF ACCESSIBILITY

Our platform transcends geographical boundaries, becoming a gateway to a global audience. Full-resolution 3D models are accessible from any device, making history available to all. Tailor the content to specific regions, languages, or cultures, ensuring that the past is not just accessible but relatable. Whether your audience is across the street or continents away, they can explore the past as if they were there.

COMMUNITY PARTICIPATION

Foster a sense of ownership and community by allowing your audience to contribute. Invite them to share their own stories, insights, and memories related to the historical sites and artifacts. With such engagement, the past becomes a living, breathing entity shaped by collective experiences.

CROSS-DISCIPLINARY POTENTIAL

Our 3D scanning and photogrammetry services don't just cater to historians, archaeologists, museum professionals, and content creators, but are also invaluable tools for engineers, conservation specialists, architects, and developers who embrace interdisciplinary collaboration that keep projects on track, stakeholders informed, and everyone inspired.

WHY CHOOSE US

Chronicle Heritage is redefining the future of archaeological field work. The fusion of heritage preservation with technology unlocks endless possibilities for research, education, and cultural appreciation. Join us in this extraordinary venture where the past meets the present and innovation knows no bounds.

PROJECT HIGHLIGHTS

NAVAJO-GALLUP WATER SUPPLY CULTURAL RESOURCE PROJECT

U.S. Bureau of Reclamation,
Northwest New Mexico

In 2011, Chronicle Heritage was awarded the nation's largest public archaeology contract. To properly treat the wealth of archaeological and ethnographic resources in the path of a 280-mile water pipeline in the Four Corners stemming from a major Congressional Indian water-rights settlement, Chronicle Heritage archaeologists, ethnographers, and historians created successful agreement documents, conducted fieldwork, completed specialized analyses, and produced reports necessary to satisfy two federal and two state agencies, as well as 22 consulting tribal entities. The multi-year project was tagged by the Obama Administration as the Department of the Interior's top-priority project nationwide, and Chronicle Heritage worked in concert with the Department to secure the additional Congressional funding necessary for the project through the passage of Public Law 114-57, the New Mexico Navajo Water Settlement Technical Corrections Act.





Chronicle Heritage supported Park environmental remediation responsibilities while documenting important archaeological resources and shedding light on the Continental Army's daily life and hardships at the encampment.

PROJECT HIGHLIGHTS

VALLEY FORGE NATIONAL HISTORIC PARK INVESTIGATIONS

National Park Service, Pennsylvania

Among the most hallowed locations in American history is Valley Forge, where George Washington's Continental Army spent the winter of 1777-78 during the American Revolutionary War. With archaeological excavations necessary as part of a long-term remedial action under the Comprehensive Environmental Response, Compensation and Liability Act (CERCLA) to address contaminated soils within a large area of the Valley Forge National Historical Park, the National Park Service (NPS) called on Chronicle Heritage to carry out the work due to its expertise in historical archaeology and HAZMAT compliance.

The extensive archaeological testing project also included state-of-the-art architectural documentation for 19th century masonry ruins. The NPS was very pleased with Chronicle Heritage's timeliness, professionalism, and responsiveness. This project was highly successful as Chronicle Heritage supported Park environmental remediation responsibilities while documenting important archaeological resources and shedding light on the Continental Army's daily life and hardships at the encampment.





PROJECT HIGHLIGHTS

PROJECT HIGHLIGHTS UNEV PIPELINE PROJECT, NEVADA & UTAH

Holly Corporation, Utah

As part of the UNEV Pipeline Project for Holly Energy, WSA, now part of Chronicle Heritage, surveyed over 500 miles of proposed pipeline corridor and ancillary facilities between Salt Lake City, Utah and Las Vegas, Nevada. Over 300 historic and prehistoric sites were identified and recorded during the survey process. The subsequent 6-volume, 5,000-page Class III BLM survey report included a geomorphological analysis of the project areas, ethnographic summary of Great Basin cultures, descriptions and assessment of each site within the project area, lithic and groundstone analysis including extensive obsidian hydration and sourcing analysis, and over 500 illustrations and maps. Chronicle Heritage prepared two treatment plans (for Nevada and Utah) that outlined a program to guide the mitigation phase for cultural resources on the UNEV project.

Over 300 historic and prehistoric sites were identified and recorded during the survey process.



PROJECT HIGHLIGHTS

BELL COUNTY EAST TO TEXAS NEW MEXICO POWER TRANSMISSION LINE PROJECT

Power Engineers, Texas

On behalf of Power Engineers, Inc., WSA, now part of Chronicle Heritage, conducted archaeological investigations for this 42-mile 345-kilovolt (kV) doublecircuit transmission line in Bell, Milam, and Robertson Counties, Texas. A total of 36 linear miles was subject to a pedestrian survey, shovel testing and observation, covering 85 landowner parcels, including potential reroutes. In total, 360 shovel tests were conducted, several new archaeological sites identified, and mitigation measures developed to lessen potential impacts to deeply buried archaeological sites.





PROJECT HIGHLIGHTS

CONSTRUCTION COMPLIANCE AND MONITORING; THREE COASTAL POWER PLANT PROJECTS

AES Pacific and NRG Energy; Los Angeles, Orange, and San Diego Counties, California

Chronicle Heritage prepared worker environmental awareness training materials, construction monitoring plans, and discovery plans while providing Native American monitoring support and full-time archaeological/paleontological construction monitors during construction of three new power plants along the Pacific coast (the Huntington Beach Energy Project, Carlsbad Energy Center, and Alamitos Energy Center). Chronicle Heritage's staff are experts with the process and requirements of the permitting authority for these power projects - the California Energy Commission - having assisted in the licensing and construction compliance of dozens of projects in California over the past 15 years.

Chronicle Heritage's staff are experts with the process and requirements of the permitting authority for these power projects.





PROJECT HIGHLIGHTS

SAN FRANCISCO'S TRANSBAY TRANSIT CENTER PROJECT

URS /Transbay Joint Powers Authority;
San Francisco, California

Chronicle Heritage is conducting archaeological investigations for the 22-Block Transbay Transit Center Project in downtown San Francisco. The project would extend the Peninsula commuter rail service to a terminal in the South of Market neighborhood, and in the process relocate necessary utilities, demolish the existing Transbay Terminal and viaduct structure, construct a new Transbay Terminal building, and integrate bus and high-speed rail service serving the City. As part of the project's cultural resource program, Chronicle Heritage designed and installed an exhibit that describes the history of the project area and relates that history to the artifacts that are on display as part of the exhibit. The exhibit, which received a Preservation Design Award from the California Preservation Foundation, will rotate through the public spaces of various government agencies around the Bay Area.





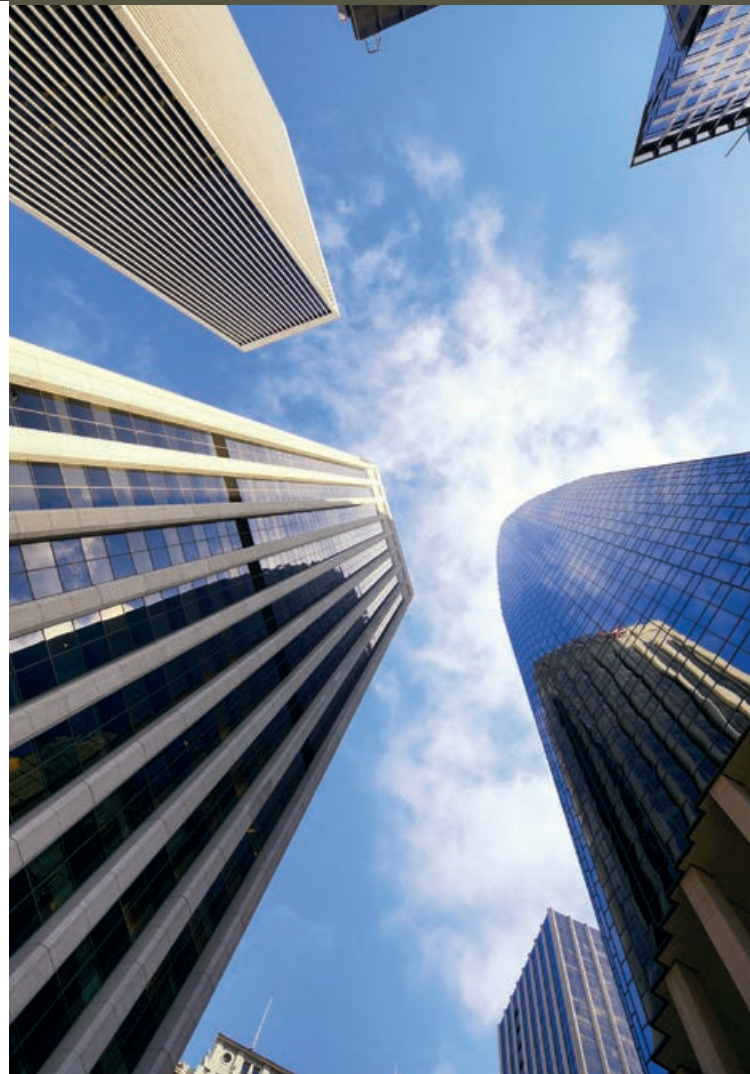
During the course of project excavations, our team of experts encountered, documented, and recovered several hundred ship timbers, artifacts and features related to the breaking yard.

PROJECT HIGHLIGHTS

SAN FRANCISCO'S 300 SPEAR STREET DEVELOPMENT PROJECT

Tishman Speyer; San Francisco, California

WSA, now part of Chronicle Heritage, conducted terrestrial archaeological investigations at the site of The Infinity mixed-use residential complex at 300 Spear Street in the Financial District of San Francisco. The project area is situated on the historic location of an 1852-1857 ship breaking yard. During the course of project excavations, our team of experts encountered, documented, and recovered several hundred ship timbers, artifacts and features related to the breaking yard, including the remains of the Candace, an 1818-built whaling ship abandoned in San Francisco in 1855. The San Francisco Museum and Historical Society accepted Tishman Speyer's donation of the remains of the Candace. The hull is presently undergoing moderate conservation and will remain in storage until its new home in the historic Pier 70 redevelopment area is finished.



PROJECT HIGHLIGHTS

RECHARGE FRESNO PROJECT

City of Fresno, California

Since early 2017, Chronicle Heritage has been working with the City of Fresno in Central California on the massive Recharge Fresno Project, providing paleontological and archaeological monitoring during the project's construction. The aim of the program is to improve the pipelines and water systems that deliver water to homes and businesses across the city - which includes the treatment of surface water from the nearby Sierra Nevada Mountains. Work is currently being conducted in the SW4 segment, which runs through the City's historic Chinatown. Chronicle Heritage experts also collaborated with the City, California State Water Board, and the California State Historic Preservation Office (SHPO) to create a plan for recording and mitigating recent discoveries in the Chinatown area.



PROJECT HIGHLIGHTS

HYWIND MAINE PROJECT

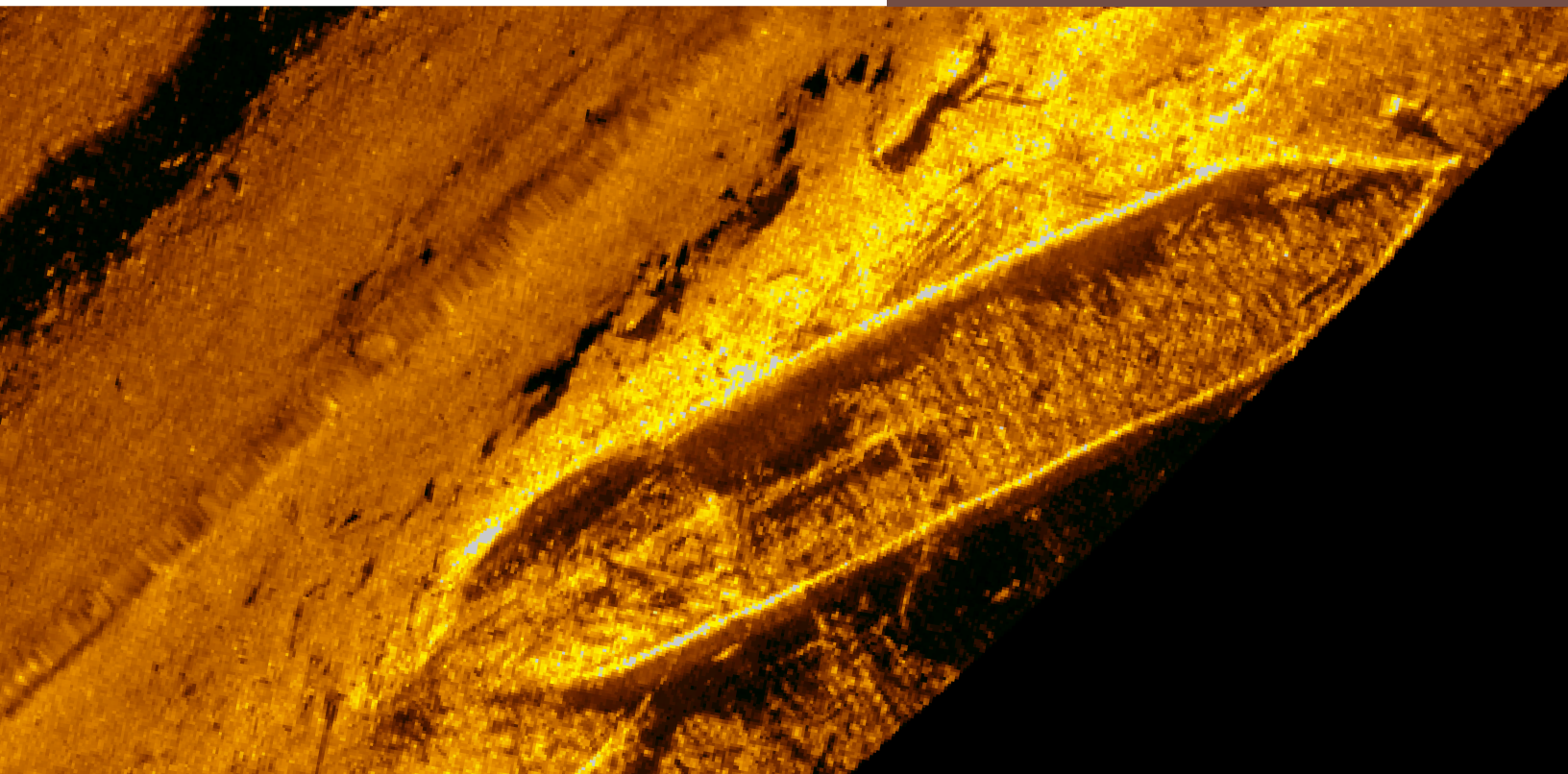
Alpine Ocean Seismic Survey, Inc.,
Offshore Maine

PanAmerican Consultants, now part of Chronicle Heritage, conducted analysis of remote-sensing data to determine the presence of potentially significant submerged cultural resources in an offshore Project Area in and south of Maine's Boothbay Harbor in state and federal waters. The Project Area included a proposed transmission line to the mainland and an offshore lease block area proposed for wind turbine construction.

Chronicle Heritage analyzed side-scan sonar records and determined 54 images depicted targets with probable structural components. Our experts also reviewed magnetic data revealing nearly 900 anomalies, some indicative of potential shipwrecks. The data were also analyzed for clustering (i.e., presence of grouped anomalies, sidescan targets, and known archaeological sites in any combination). Four anomalies and seven clusters were ultimately presumed to be potentially significant historic cultural resources, and Chronicle Heritage recommended these 11 corresponding areas in the Project Area be avoided during construction.



Our experts also reviewed magnetic data revealing nearly 900 anomalies, some indicative of potential shipwrecks.





PROJECT HIGHLIGHTS

MARANA CENTER DATA RECOVERY

Vintage Partners; Tucson, Arizona

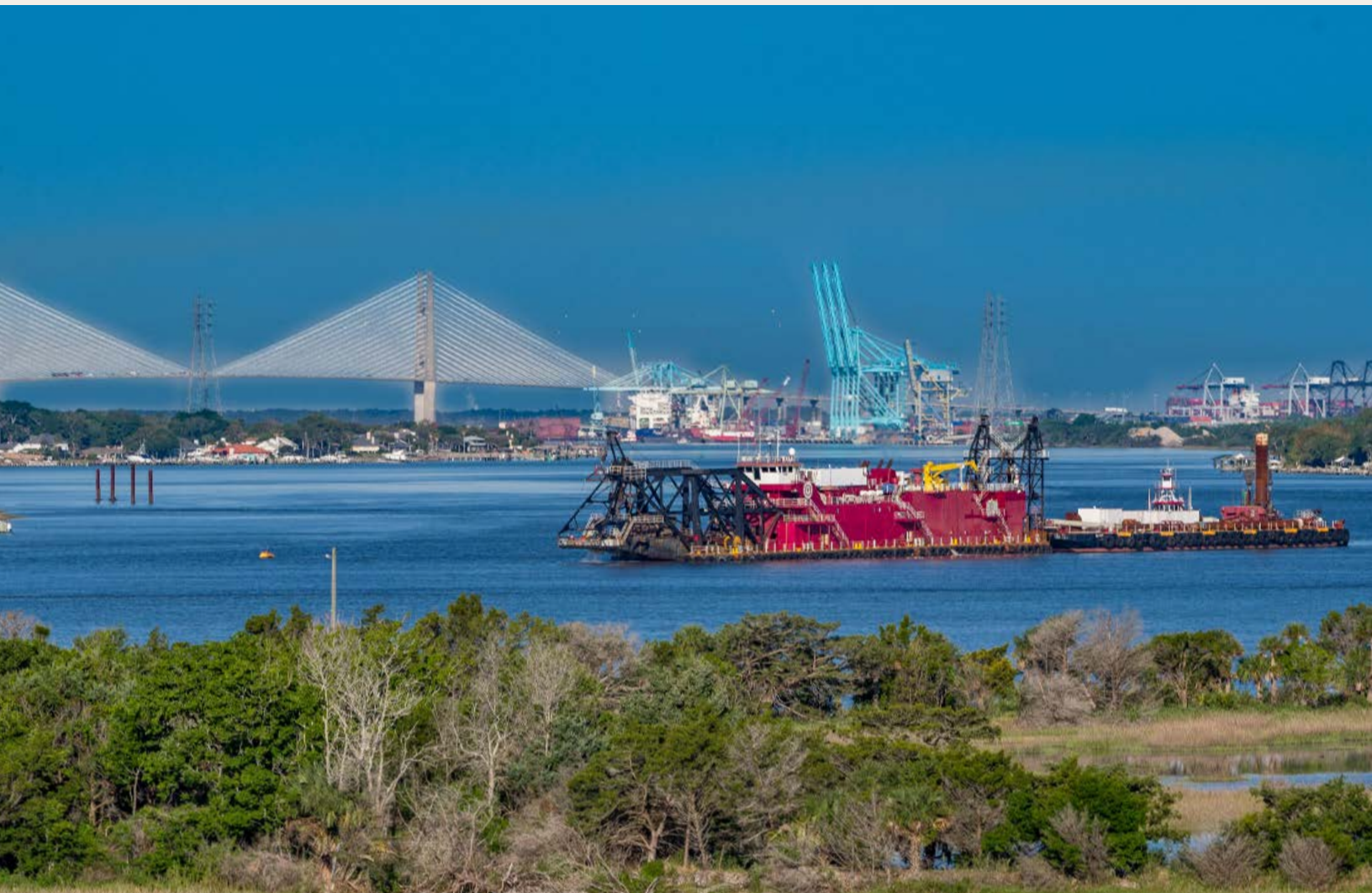
To meet a previously impossible deadline for a land-development deal that lay in direct conflict with a large, federally regulated prehistoric archaeological site, Chronicle Heritage leveraged its digital Chronicle Way system. The field component of the project was able to be compressed from a typical 18 weeks to 10 weeks. Moreover, the clearance report was submitted the day after fieldwork was completed and was approved by the lead federal agency, two state agencies, and tribes overseeing the project within 30 days, with Chronicle Heritage's scientifically important work on the Hohokam village site receiving high marks all around. The project stands as the nation's first large-scale all-digital archaeological excavation.

PROJECT HIGHLIGHTS

CSS GEORGIA, SAVANNAH HARBOR, GA

DCA/GEC, A Joint Venture LLC for Savannah District, USACE and Georgia Ports Authority

Previous surveys identified the remains of the CSS *Georgia*, a Civil War ironclad-ram within the Savannah Harbor Expansion Project APE (SHEP). However, as proposed, the SHEP would have adversely affected this NRHP-listed site. Therefore, in 2015, and under subcontract to DCA/GEC, A Joint Venture LLC for Savannah District, USACE and Georgia Ports Authority, Chronicle Heritage fully archaeologically documented and systematically recovered the remains of the CSS *Georgia* in concert with the U.S. Navy, Supervisor of Salvage and the U.S. Navy's Mobile Diving Salvage Unit 2. Despite zero underwater visibility and other extreme conditions, our archaeologists maximized recovery efforts with a clean safety record and deliverables completed on time with no budget overruns.





Chronicle Heritage completed data recovery investigations and obtained clearance for the parcel from the CAO well over a month ahead of groundbreaking on the project, allowing our client to commence construction on schedule.

PROJECT HIGHLIGHTS

LAS CANOPAS LOCUS A DATA RECOVERY

Rivendell Global Estate; Phoenix, Arizona

A parcel of undeveloped private land in Phoenix, Arizona lies within the boundary of Las Canopas, a prehistoric village site where previous archaeological mitigation was never completed due to lack of funding. In advance of a proposed rental apartment community complex within the parcel, the client engaged Chronicle Heritage based on its excellent reputation among Arizonian developers in completing major data recovery projects on or ahead of schedule. Chronicle Heritage conducted extensive data recovery, submitted an End of Fieldwork (EOF) report within two business days after completion of fieldwork, and obtained clearance for the parcel from the City of Phoenix Archaeology Office (CAO) over a month ahead of groundbreaking. These were made possible by Chronicle Heritage's experience fielding sizable field crews, its all-digital workflow, and strong relationships with local reviewing agencies.





STAY ON TRACK WITH ALL-DIGITAL CULTURAL AND HERITAGE RESOURCE MANAGEMENT

ChronicleHeritage.com

Info@ChronicleHeritage.com

Tel: 866.563.2536

Fax: 602.254.6280

ALABAMA

Tuscaloosa
205.248.8767

ARIZONA

Phoenix
602.261.7253

Tempe
480.894.5477

Tucson
520.918.5512

CALIFORNIA

S.F. Bay Area
925.253.9070

Fresno
559.490.6880

Los Angeles
626.408.8006

Redlands
909.254.4035

Sacramento
916.384.0251

San Diego
619.210.0199

COLORADO

Denver
303.214.4301

Ignacio
970.563.4615

FLORIDA

Gainesville
352.372.2633

Lakeland
813.508.5686

Pensacola
706.499.5449

Tallahassee
850.296.3669

Tampa Bay
727.940.9480

GEORGIA

Columbus
706.565.6179

MASSACHUSETTS

Littleton
978.793.2579

MICHIGAN

Dexter
517.788.3550

MINNESOTA

Minneapolis
763.354.9313

NEVADA

Las Vegas
702.779.3033

Reno
775.954.0052

NEW MEXICO

Albuquerque
505.516.0261

NEW YORK

Buffalo
716.821.1650

New York
212.567.2536

NORTH CAROLINA

Tarboro
252.641.1444

OHIO

Columbus
614.549.6190

OREGON

Portland
971.801.0677

PENNSYLVANIA

West Chester
610.436.9000

TENNESSEE

Memphis
901.454.4733

TEXAS

Austin
512.394.7477

UTAH

Salt Lake City
801.203.4445

VIRGINIA

Chantilly
703.354.9737

WISCONSIN

Milwaukee
414.446.4121