



**CHRONICLE™**  
HERITAGE

# RENEWABLE ENERGY QUALIFICATIONS

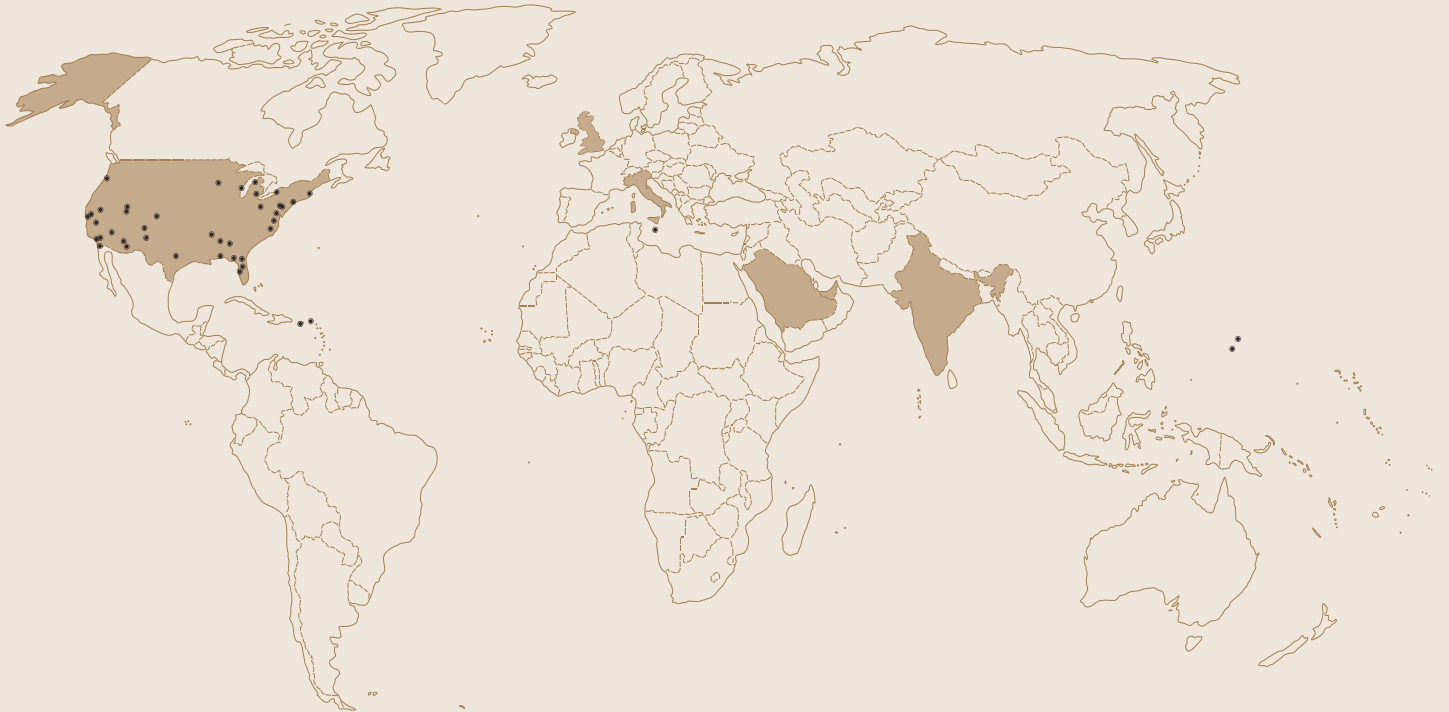
Business-Focused Cultural and  
Natural Heritage Management



# BREAK NEW GROUND

Chronicle Heritage is dedicated to solution-driven consulting on behalf of clients needing their projects guided through the regulatory challenges posed by cultural resources (prehistoric, historic, architectural, ethnographic, and paleontological).

Chronicle Heritage has been assisting government agencies, tribes, and private-sector clients with their renewable energy projects since 2009. Our work includes cultural resources support for permitting and licensing of well over 500,000 acres of renewable energy development, completing construction compliance for dozens of multi-year renewable energy and power generation projects, and helping tribes establish Tribal Historic Preservation Offices (THPO) and with infrastructure projects on tribal land. Our work has gained the trust of government agencies including the Bureau of Land Management, Department of Energy, and Federal Energy Regulatory Commission, resulting in repeat business from a wide range of private-sector firms.



## U.S. OFFICE LOCATIONS

TUSCALOOSA, AL  
PHOENIX, AZ  
TEMPE, AZ  
TUCSON, AZ  
S.F. BAY AREA, CA  
FRESNO, CA  
LOS ANGELES, CA

REDLANDS, CA  
SACRAMENTO, CA  
SAN DIEGO, CA  
DENVER, CO  
IGNACIO, CO  
GAINESVILLE, FL  
LAKELAND, FL

PENSACOLA, FL  
TALLAHASSEE, FL  
TAMPA BAY, FL  
COLUMBUS, GA  
LITTLETON, MA  
DEXTER, MI  
MINNEAPOLIS, MN

LAS VEGAS, NV  
RENO, NV  
ALBUQUERQUE, NM  
BUFFALO, NY  
NEW YORK, NY  
TARBORO, NC  
COLUMBUS, OH

PORTLAND, OR  
PHILADELPHIA, PA  
WEST CHESTER, PA  
MEMPHIS, TN  
AUSTIN, TX  
OGDEN, UT  
SALT LAKE CITY, UT

CHANTILLY, VA  
RICHMOND, VA  
MILWAUKEE, WI

## INTERNATIONAL PRESENCE

GUAM  
INDIA

ITALY  
KINGDOM OF SAUDI ARABIA

MALTA  
N. MARIANA ISLANDS

PUERTO RICO  
UNITED ARAB EMIRATES

UNITED KINGDOM  
U.S. VIRGIN ISLANDS





## OUR APPROACH

The advanced digital system we bring to our clients improves the efficiency of our work and the quality of our products.

Our system improves the quality of data collected in the field while making the process more efficient, allowing us to deliver a higher-quality product to our clients at a better value and in less time.

Our system employs a customized database, mobile devices, and computers. The process streamlines data collection, eliminates rework and error, and produces report-ready data from the start, allowing faster turnarounds on deliverables and improving upon traditional data collection and reporting methods.

## OUR SYSTEM

- Eliminates digitization after fieldwork
- Enables faster, more accurate data entry via autofill and other features
- Safeguards your project data with continuous backups
- Speeds projects through to completion

The nation's first all-digital firm of its kind, Chronicle Heritage has developed the premier approach to projects, employing a fully-digital workflow for data collection and management. We call it the Chronicle Way.

“ Your use of innovative technologies facilitated quick access to data and allowed forms and maps to be stored in the cloud, thus avoiding lost information. Presented with an extremely compressed schedule, you succeeded in completing the field investigations on time. ”

Curtis Winner  
Director of Safety and Technical & Land Services, NMGC





# OUR EXPERTISE & SERVICES

## CULTURAL RESOURCES

- Historic, Prehistoric, and Underwater Archaeology
- Architectural History
- Cultural Resource Surveys
- Testing and Local and National Register Evaluations
- Data Recovery and Mitigation
- Management Plans
- Cultural Resource Overviews and Historic Contexts
- Management Plans, Testing and Data Recovery Plans, Research and Sampling Designs
- Ethnographic and Ethnohistoric Research
- Tribal Consultation
- Stakeholder Engagement

## PALEONTOLOGY

- Paleontological Field Surveys
- Literature Reviews and Research
- Fossil Salvage and Recovery

## MAJOR PROJECT SOLUTIONS

- Construction Monitoring
- Due Diligence Assessments
- Worker Environmental Awareness Training

## GIS AND TECHNOLOGY

- Geographic Information Systems (GIS) and Database Services
- Geophysical Surveys
- Aerial Imaging
- 3D Modeling



## EXPERTS IN NATIVE AMERICAN CONSULTATION

### THE EXPERTS

Chronicle Heritage was brought in by the Wyoming BLM to facilitate the Native American consultation process with 24 tribes from across the Plains for an oil and gas EIS.

### FAMILIARITY

Our experience with Section 106 and CEQA (California Environmental Quality Act) provide us with invaluable insights into how the tribal consultation process can become a win-win proposition.

### EXPERIENCE

Chronicle Heritage staff have multiple decades of experience with numerous tribal representatives along the Pacific Coast, across the Rocky Mountains, and the Great Plains.

## WHAT OUR CLIENTS SAY

“Your excavation team exceeded our expectations. It was a difficult task and your performance was much appreciated to keep our project schedule moving forward.”

“Not only have Chronicle Heritage met all expectations of the Bureau of Reclamation, but they have been extremely proactive in meeting tribal concerns and addressing tribal questions. They have been an excellent representative for the agency. Their professionalism and excellent communication skills have been a great benefit to this large and complex project that is currently the largest project in the Department of the Interior and Reclamation.”



WE HELP CLIENTS TO CLEARLY UNDERSTAND THEIR REGULATORY OBLIGATIONS, THEN DESIGN APPROACHES TO ADDRESS THOSE OBLIGATIONS THAT ARE EFFECTIVE, ADEQUATE, AND DEFENSIBLE.





# OUR KEY LEADS



**MATTHEW TENNYSON, M.A., RPA | SAN DIEGO, CA**

Renewable Energy Market Manager

Matthew has supported permitting and compliance for many of the largest renewable energy projects throughout the western U.S. He is an expert in NEPA, NHPA, Section 106, CEQA, tribal consultation, and regulatory requirements for all types of energy-related development projects. He routinely helps clients work through permitting and licensing requirements of municipal, state, and federal agencies.



**VANESSA MIRRO, M.A., RPA | LOS ANGELES, CA**

Senior Vice President

Vanessa has more than 20 years of experience in cultural resource management in California, the eastern United States, and Canada. She has managed numerous large-scale, multi-year projects and conducted successful consultation with numerous Native American groups and resource agencies.



**BEN DIBIASE, M.A. | NEW YORK, NY OFFICE**

Regional Principal - Northeast

Ben is a historian bringing over a decade of professional historic research and business management experience in the Southeast and Northeast regions to Chronicle Heritage. Ben is experienced in managing large-scale cultural resource contracts in both the public and private sector with a focus on the renewable energy sector.

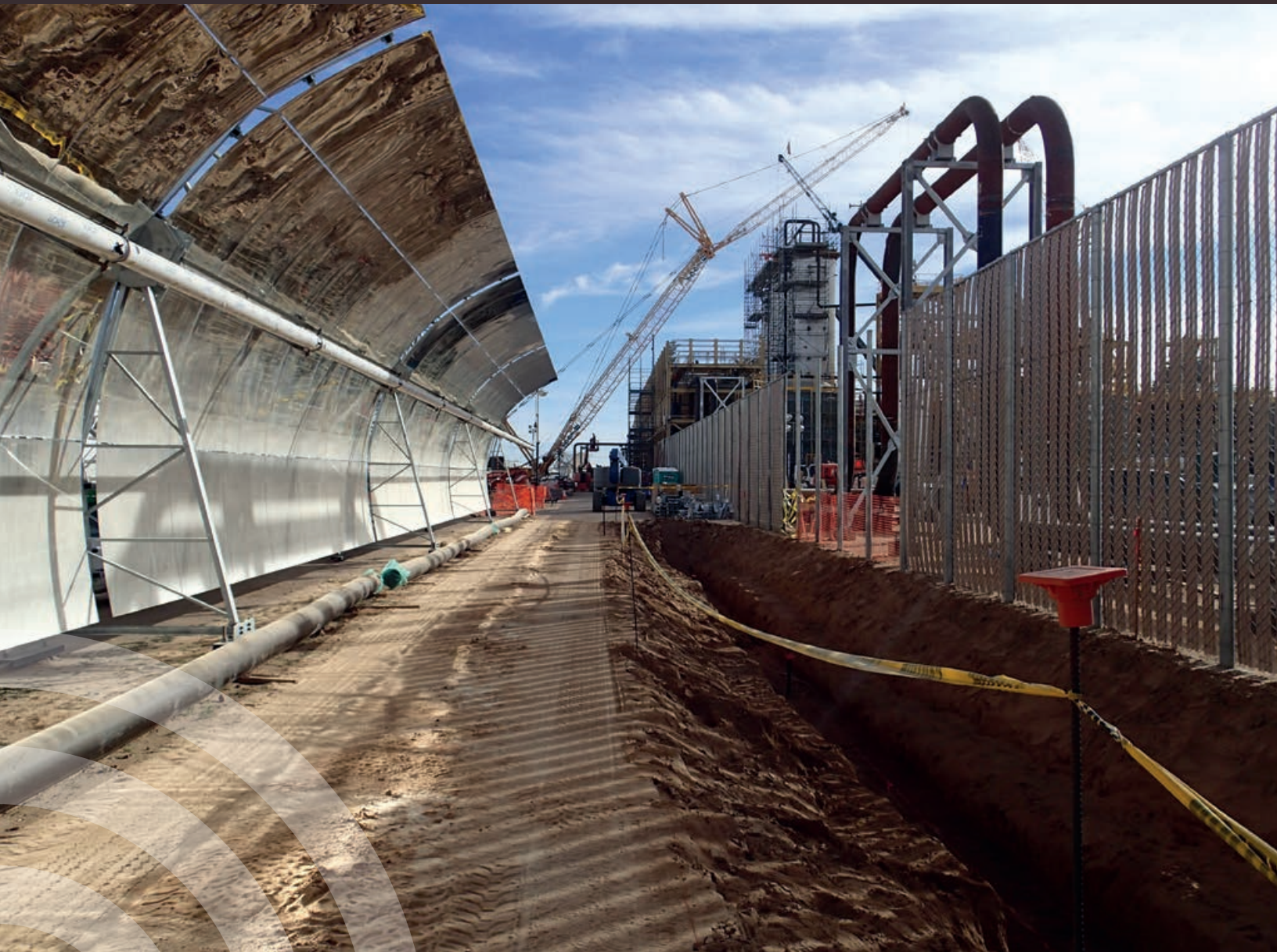
**“WE PRIDE OURSELVES  
ON BEING THE MOST  
INNOVATIVE TEAM OF  
PROBLEM SOLVERS IN  
THE BUSINESS.”**





**OUR REPUTATION FOR  
MAINTAINING SCHEDULES  
AND STAYING ON BUDGET  
WHILE MEETING REGULATORY  
REQUIREMENTS IS  
BEYOND COMPARE.**

Chronicle Heritage has assisted with permitting and licensing of well over **500,000 acres of renewable energy development** and completed construction compliance for dozens of major multi-year renewable energy and power generation projects.





## PROJECT HIGHLIGHTS

# HYWIND MAINE PROJECT

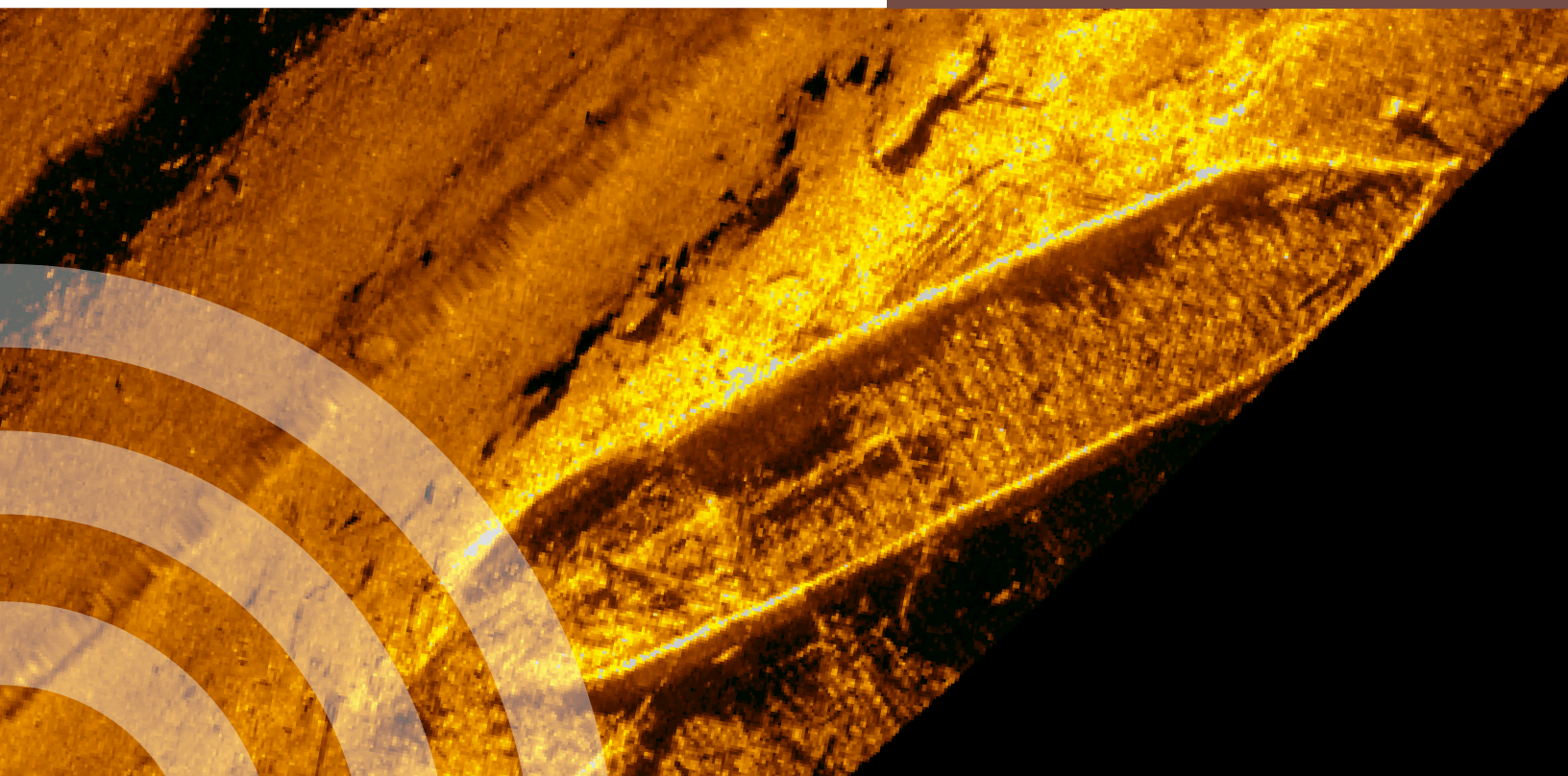
## Alpine Ocean Seismic Survey, Inc., Offshore Maine

PanAmerican Consultants, now part of Chronicle Heritage, conducted analysis of remote-sensing data to determine the presence of potentially significant submerged cultural resources in an offshore Project Area in and south of Maine's Boothbay Harbor in state and federal waters. The Project Area included a proposed transmission line to the mainland and an offshore lease block area proposed for wind turbine construction.

Chronicle Heritage analyzed side-scan sonar records and determined 54 images depicted targets with probable structural components. Our experts also reviewed magnetic data revealing nearly 900 anomalies, some indicative of potential shipwrecks. The data were also analyzed for clustering (i.e., presence of grouped anomalies, sidescan targets, and known archaeological sites in any combination). Four anomalies and seven clusters were ultimately presumed to be potentially significant historic cultural resources, and Chronicle Heritage recommended these 11 corresponding areas in the Project Area be avoided during construction.



Our experts reviewed magnetic data revealing nearly 900 anomalies, some indicative of potential shipwrecks.







Chronicle Heritage was instrumental in successfully revising the cultural resource mitigation measures for the Palen Solar Project.

**PROJECT HIGHLIGHTS**

**PALEN SOLAR PROJECT**

**EDF Renewables; Riverside County, California**

Chronicle Heritage is providing cultural and paleontological resource support to EDF Renewables (EDFR) for the Palen Solar Project (PSP), located on BLM-managed land in Riverside County. Chronicle Heritage is in the process of drafting all cultural and paleontological plans for the PSP, including: the Monitoring and Discovery Plan, Tribal Participation Plan, NAGPRA Plan of Action, Cultural Resource Research Design, and the Paleontological Resources Monitoring and Mitigation Plan.

Chronicle Heritage is also providing cultural and paleontological resource monitoring for preconstruction geotechnical and site fencing activities at the PSP. Paleontological monitors were a late requirement for this effort, but Chronicle Heritage was successful in providing paleontological field staff ahead of initiation of geotechnical studies and avoiding project delays.

Chronicle Heritage was instrumental in revising the cultural resource mitigation measures for the PSP, providing the language to replace an overly burdensome survey far afield of the PSP that were not in line with the effects the project will have on the landscape. Chronicle Heritage was successful in revising the mitigation measures for the Desert Training Center to a much less costly mitigation program that still met the Project's requirements to mitigate project effects.

## PROJECT HIGHLIGHTS

# NEXTERA NORTH SKY WIND ENERGY PROJECT

NextEra Energy Resources, LLC;  
Kern County, California

Chronicle Heritage supported completion of a cultural resource inventory of over 8,000 acres in support of the North Sky River (NSR) Wind Energy Project located in Kern County, California.

The project proponent was North Sky River Energy, LLC (NSRE), a wholly-owned subsidiary of NextEra Energy Resources, LLC. NSR is located on 12,582 acres of land under Kern County permitting jurisdiction north of the unincorporated town of Mojave and north-northeast of the city of Tehachapi, with ancillary facilities, such as access roads and collector lines, on public lands administered by the BLM.

The purpose of the cultural resource inventory was to determine the presence of historical resource and historic properties within the study area, and the area of potential effects (APE), pursuant to CEQA and Section 106 of the National Historic Preservation Act (NHPA) (36 Code of Federal Regulations [CFR] 800), respectively.

CHRONICLE HERITAGE  
SUPPORTED COMPLETION  
OF A CULTURAL RESOURCE  
INVENTORY OF OVER 8,000  
ACRES IN SUPPORT OF THE  
NORTH SKY RIVER (NSR)  
WIND ENERGY PROJECT.







Since the site could not be avoided by the proposed construction, mitigation by excavation was recommended. Data recovery efforts resulted in the entire site being documented and the complete excavation of the portion of the site within the area of direct effect.



## PROJECT HIGHLIGHTS

# FOUR CORNERS POWER PLANT DATA RECOVERY PROJECT

**Arizona Public Service (APS) Company:  
Navajo Nation, San Juan County,  
New Mexico**

Chronicle Heritage was contracted to mitigate the affects of a large trenching/excavation project on a prehistoric archaeological site within the Four Corners Power Plant property on the Navajo Nation, Nenahnezad Chapter, in San Juan County, New Mexico. Site NM-H-20-155 had been recommended eligible for listing on the National Register of Historic Places (NRHP) under Criterion D. Since the site could not be avoided by the proposed construction, mitigation by excavation was recommended.

Data recovery efforts resulted in the entire site being documented and the complete excavation of the portion of the site within the area of direct effect. This work mitigated adverse effects to the site. The portion of the site not impacted by construction remains recommended as eligible to the NRHP. All artifacts were reinterred per the Navajo Nation Historic Preservation Department (NNHPD) direction at a location on property of the Four Corners Power Plant, and the documents were curated at NNHPD in Window Rock and at APS in Phoenix.

# BREAK NEW GROUND

## KEY CONTACT

**Matthew Tennyson**, Renewable Energy Market Manager  
MTennyson@ChronicleHeritage.com  
Tel: 949.981.5862

**Vanessa Mirro**, Senior Vice President  
VMirro@ChronicleHeritage.com  
Tel: 626.807.0364

## ChronicleHeritage.com

Info@ChronicleHeritage.com  
Tel: 866.563.2536  
Fax: 602.254.6280

### ALABAMA

Tuscaloosa  
205.248.8767

### ARIZONA

Phoenix  
602.261.7253

Tempe  
480.894.5477

Tucson  
520.918.5512

### CALIFORNIA

S.F. Bay Area  
925.253.9070

Fresno  
559.490.6880

Los Angeles  
626.408.8006

Redlands  
909.254.4035

Sacramento  
916.384.0251

San Diego  
619.210.0199

### COLORADO

Denver  
303.214.4301

Ignacio  
970.563.4615

### FLORIDA

Gainesville  
352.372.2633

Lakeland  
813.508.5686

Pensacola  
706.499.5449

Tallahassee  
850.296.3669

Tampa Bay  
727.940.9480

### GEORGIA

Columbus  
706.565.6179

### MASSACHUSETTS

Littleton  
978.793.2579

### MICHIGAN

Dexter  
517.788.3550

### MINNESOTA

Minneapolis  
763.354.9313

### NEVADA

Las Vegas  
702.779.3033

Reno  
775.954.0052

### NEW MEXICO

Albuquerque  
505.516.0261

### NEW YORK

Buffalo  
716.821.1650

New York  
212.567.2536

### NORTH CAROLINA

Tarboro  
252.641.1444

### OHIO

Columbus  
614.549.6190

### OREGON

Portland  
971.801.0677

### PENNSYLVANIA

Philadelphia  
610.245.9074

West Chester  
610.436.9000

### TENNESSEE

Memphis  
901.454.4733

### TEXAS

Austin  
512.394.7477

### UTAH

Ogden  
801.394.0013

Salt Lake City  
801.203.4445

### VIRGINIA

Chantilly  
703.354.9737

Richmond  
336.402.6631

### WISCONSIN

Milwaukee  
414.446.4121